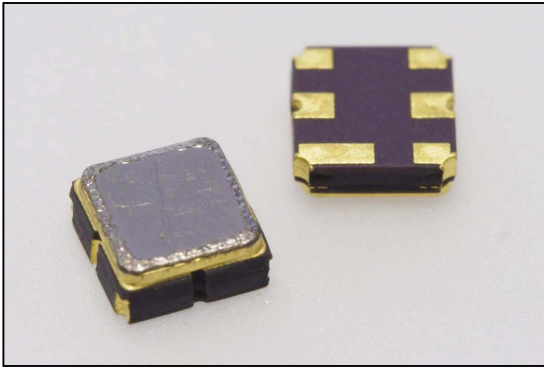


Central frequency - 960 MHz

Passband - 23.1 MHz

Complies with Directive 2002/95/EC (RoHS)

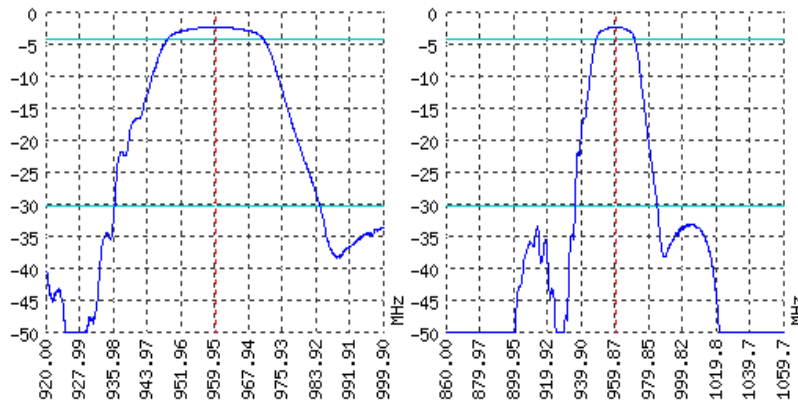


Looking for information on other SAW devices at: <http://aec-pro.com/filters.php>

Designed by: Ltd. AEC Design

Mass production: Ltd. AEC

TYPICAL PERFORMANCE



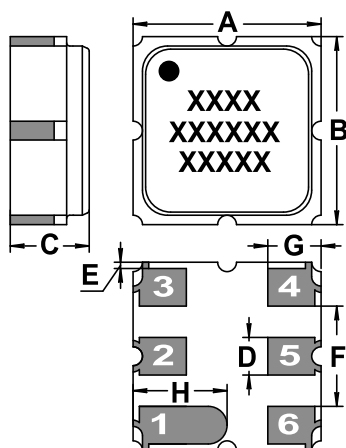
SPECIFICATIONS

| Parameter                  | Unit | Low frequency  | Typical              | Upper frequency |
|----------------------------|------|----------------|----------------------|-----------------|
| Central frequency          | MHz  | -              | 960                  | -               |
| Insertion loss             | dB   | -              | Not more 3           | -               |
| Bandwidth edge -2dB level  | MHz  | Not more 949.5 | -                    | Not less 970.5  |
| Bandwidth edge -28dB level | MHz  | Not less 933.5 | -                    | Not more 986.5  |
| Amplitude ripple           | dB   | -              | Not more 2           | -               |
| Group Delay Ripple         | ns   | -              | -                    | -               |
| Ultimate rejection         | dB   | -              | 28                   | -               |
| Operating temperature      | °C   | -55            | 22                   | +85             |
| Substrate                  | -    | -              | Lithium tantalate 36 | -               |

Notes:

- For information. Order a ЦПАР.433561.31 TY for a complete and updated data.
- Specification valid for measurements in AEC test fixture.

CASE DCC 6

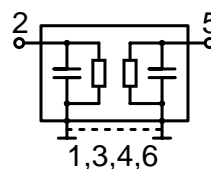


<http://aec-pro.com/cases.php>



| DIMENSIONS (mm) |      |
|-----------------|------|
| A               | 3    |
| B               | 3    |
| C               | 1.26 |
| D               | 0.6  |
| E               | 0.1  |
| F               | 1.6  |
| G               | 0.85 |
| H               | 1.5  |

MATCHING



| Input 50 Ohm |   | Output 50 Ohm |   |
|--------------|---|---------------|---|
| L1, nH       | - | L2, nH        | - |
| C1, pF       | - | C2, pF        | - |

Signal input: 2  
Signal output: 5  
Ground: other pin

\*Matching condition depends on PCB layout.

Recommendations:

- See the relevant ЦПАР for maximum permissible input signal power in the bandwidth.
- Input signal amplitude in the stop band is limited to 5 V.
- DC voltage at the input (output) of the filter should not exceed 10 V.
- It is recommended to include the coupling capacitor between the device and the generator (load).
- SAW filters are sensitive to static electricity, therefore corresponding precautions should be taken while working with them.
- Do not expose the device to frequency vibrations more than 5 kHz. Do not use ultrasonic cleaners.

Design and production SAW filters, resonators, delay lines, sensors.

**AEK** Ltd. AEC Mass production. Acceptance - QCID.  
aec@aec-pro.com | tel./fax (812)252-93-70

**AEC** Ltd. AEC Design Design and production. Military acceptance.  
admin@aec-design.com | tel.(812)377-04-26 | fax.(812)364-60-69